

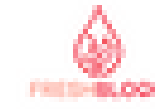


Co-funded by the European Union

# FROM SCIENTISTS TO INNOVATORS FOR INDUSTRY

## SCI Fi 2022

## Victoria Goldberg





# About EIT Health

**Our vast community, including approximately 150 world-class partner organisations, works across borders to bring together the three worlds of business, research and education. Backed by the European Union, EIT Health brings together the brightest minds from the worlds of business, research, education and healthcare delivery to answer the biggest health challenges Europe faces.**



Co-funded by the  
European Union

# Our Partners

## Academic Partners



# Non-Academic Partners







## Why was SCI FI created?

'Lack of knowledge which skills are currently needed on the labour market'

'No valuable training available, e.g. in remote form'

'Lack of support and knowledge from supervisor how to commercialize research results'

'Topics of doctoral studies are not useful, so-called "hot topics" are missing in the program, e.g. AI - our research has no direct impact on health care'

'Scientific publications are the priority'



## SCI FI 2022

### What is Sci Fi

- A three month blended-learning programme running from September to December 2022
- Acquire skills for an industry setting (soft skills, creative skills, business skills and industry specific skills)

### Who can apply

- (Early career) researchers who are keen to transition to industry
- PhD candidates, PostDocs, Clinicians
- Background in MedTech, Pharma, Healthcare



# Programme Structure

## The Full Programme

- 13 weeks of online learning (7 core and 4 bonus modules)
- Webinars and Mentoring
- 3 Events (Kick-off in Lodz, Final Event in Vienna)
- Case study and module assignments (team work)
- Pitch training

Time commitment: 4-5 hours per week

## The Light Programme

- 12 weeks of online learning (7 core and 4 bonus modules)
- Participation in the Midterm event (online)
- Participation in recruitment event

Time commitment: 1,5 hours per week



# Programme Structure: Light programme

Week 36	1. Communication & Collaboration
38	2. Understanding the customer
40	3. Strategic Management
41	4. Project management
42	5. Operational management
44	6. IP
45	7. Finance, Market Access & Pricing

## \* Bonus modules:

- Regulatory affairs for medical devices
- Digital transformation
- GDPR and patient data
- Clinical trials

You choose at least one Bonus module



# Programme Structure: Full Programme

industrial case study

2-3 Sep

**KICK-OFF (in Lodz)**

1. Communication & Collaboration

**MENTORING**

2. Understanding the customer

**MENTORING**

3. Strategic Management

4. Project management

**MENTORING**

28 Oct

**MID-WAY (online)**

5. Operational management

6. IP

7. Finance, Market Access & Pricing

**PITCH TRAINING (online)**

4-6 Dec

**FINAL (in Vienna)**



\* Bonus modules:

- Regulatory affairs for medical devices
- Digital transformation
- GDPR and patient data
- Clinical Trials

You choose at least one Bonus module

# Programme Structure: Full Programme

		Mon	Tue	Wed	Thu	Fri
	36	6	7	8	9	10
					Module 1 available	
Sat	Sun	37	13	14	15	16
11	12					17
Watch pre-recorded session (1.5h) + Work on assignment for module 1 (1.5h max)						1h: Q&A & Feedback session
					Module 2 available	
	18	19	38	20	21	22
						23
						24
Watch pre-recorded session (1.5h) + Work on assignment for module 1 (1.5h max)						1h: Q&A & Feedback session
					Module 3 available	
	25	26				

**Modules open on a Friday**  
**Webinars are on Fridays: 15:00 - 16:30**

# Programme Structure: Full Programme

## Industry Cases

- 3 - 5 Industry cases
- based on a real and unsolved problem
- presented at the Kick-off event
- supported by mentors from the industry
- working in multidisciplinary teams (5 members)



# Programme Structure



	Full Programme	Light Programme	
industrial case study	Kick off event with case study presentation	✓	✗
	7 core online modules	✓	✓
	4 industry specific modules	✓	✓
	8 expert webinars with Q&A	✓	✗
	Assignments	✓	✗
	Mid-program event	✓	✓
	Mentoring with industrial experts	✓	✗
	Final event with pitch session	✓	✗
	Time commitment per week	~4 - 5 hours	~1,5 hours
Participation fee*	500 €	100 €	
Certification fee	Included	50 €	

**Early bird discount: apply by the 30.04.2022 and get 50% off the Full Programme Fee (so you save 250€)**





## What you get



Hands-on blended learning approach for future transformers



Top-notch international experts from industry, business and academia



Challenge-based and multidisciplinary learning with real life case studies & assignments



Access to industry, access to best talents



Access to EIT Health Alumni Network with best universities, research centres, companies, start-ups



Recruitment events, with recruitment workshops and networking



# Sci Fi 2022: From Scientists to Innovators for Industry

<https://eithealth.eu/programmes/sci-fi/>

victoria.goldberg@fau.de